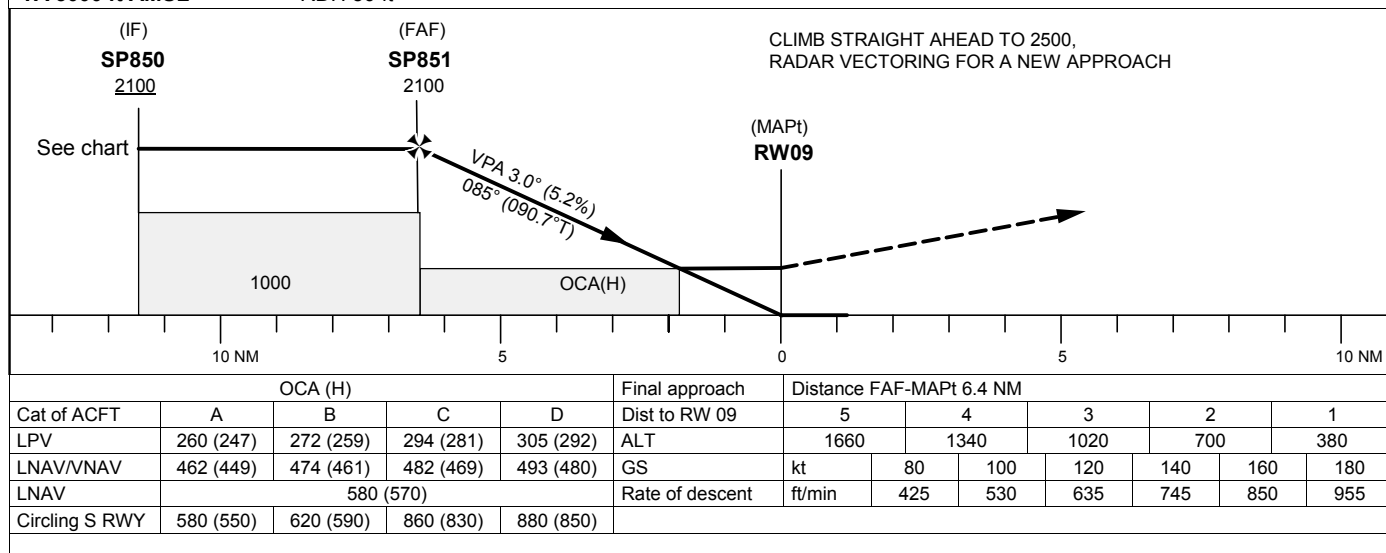
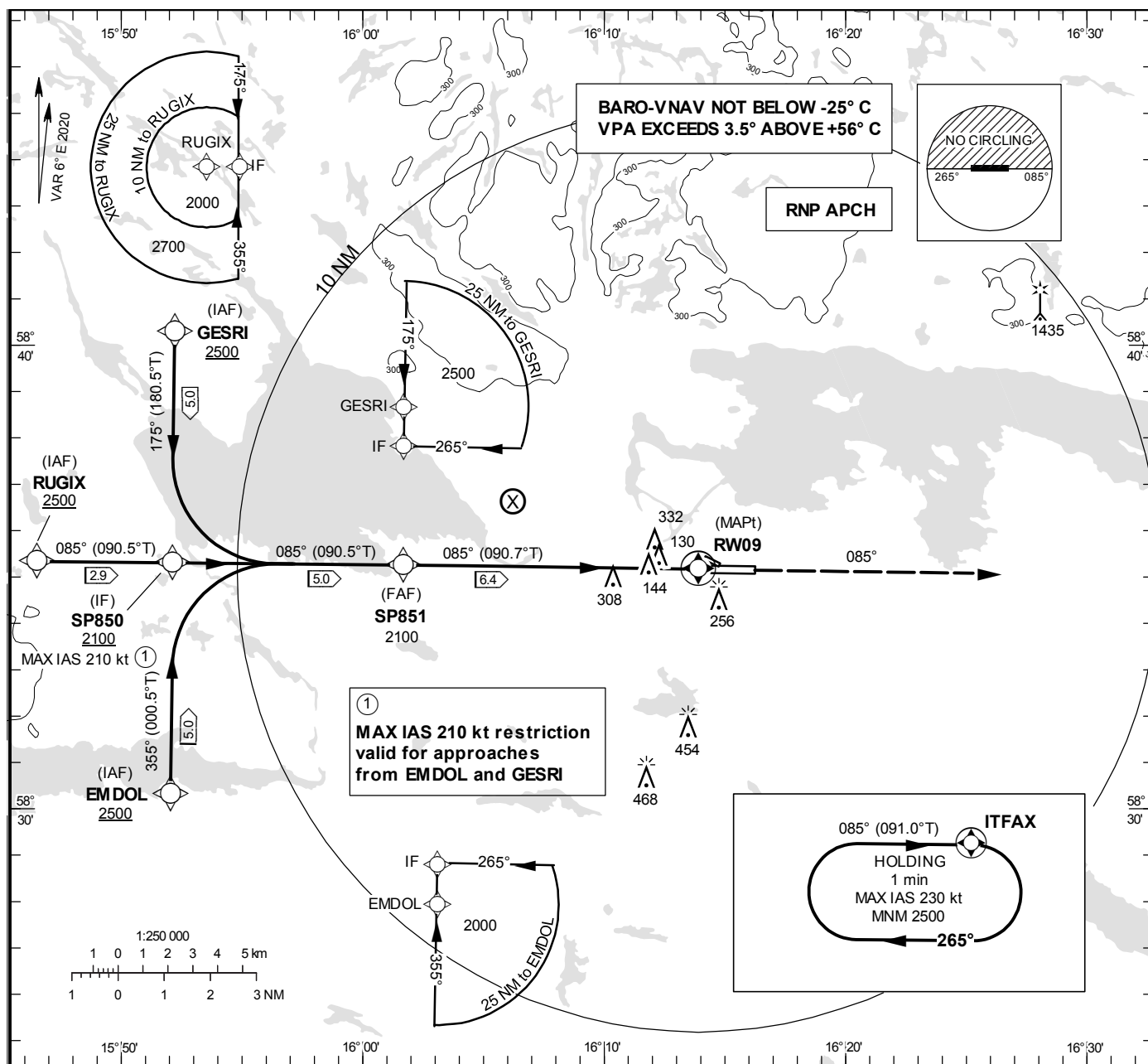


**INSTRUMENT  
APPROACH  
CHART – ICAO**

**THR ELEV 13.3 ft, AD ELEV 32 ft**  
OCH are related to THR.  
BRG are MAG (True).  
ALT, HGT and ELEV in ft.

KUNGSÄNGEN TOWER 120.355  
ÖSTGÖTA APPROACH 132.955



**NORRKÖPING/Kungsängen****RNP RWY 09 via RUGIX**

Path Desc	Waypoint Identifier	Fly-over	Course °M(°T)	Dist (NM)	Turn Dir	Altitude	Speed	VPA/ RDH	Rec Navaid	Navigation Specification
IF	RUGIX	-	-	-	-	+2500	-	-	-	RNP APCH
TF	SP850	-	085°(090.5°)	2.9	-	+2100	-	-	-	RNP APCH

**RNP RWY 09 via GESRI**

Path Desc	Waypoint Identifier	Fly-over	Course °M(°T)	Dist (NM)	Turn Dir	Altitude	Speed	VPA/ RDH	Rec Navaid	Navigation Specification
IF	GESRI	-	-	-	-	+2500	-	-	-	RNP APCH
TF	SP850	-	175°(180.5°)	5.0	-	+2100	-210	-	-	RNP APCH

**RNP RWY 09 via EMDOL**

Path Desc	Waypoint Identifier	Fly-over	Course °M(°T)	Dist (NM)	Turn Dir	Altitude	Speed	VPA/ RDH	Rec Navaid	Navigation Specification
IF	EMDOL	-	-	-	-	+2500	-	-	-	RNP APCH
TF	SP850	-	355°(000.5°)	5.0	-	+2100	-210	-	-	RNP APCH

Path Desc	Waypoint Identifier	Fly-over	Course °M(°T)	Dist (NM)	Turn Dir	Altitude	Speed	VPA/ RDH	Rec Navaid	Navigation Specification
TF	SP850	-	-	-	-	+2100	-	-	-	RNP APCH
TF	SP851	-	085°(090.5°)	5.0	-	@2100	-	-	-	RNP APCH
TF	RW09	Y	085°(090.7°)	6.4	-	@63	-	-3.0/50	-	RNP APCH
CA	-	-	085°(090.7°)	-	-	@2500	-	-	-	RNP APCH
VM	-	-	085°	-	-	-	-	-	-	RNP APCH

**ESSP Holding ITFAX**

Path Desc	Waypoint Identifier	Fly-over	Course °M(°T)	Dist (NM)	Turn Dir	Altitude	Speed	VPA/ RDH	Rec Navaid	Navigation Specification
HM	ITFAX	Y	085°(091.0°)	-	R	+2500	-230	-	-	RNAV 1

## FAS Data Block

## RNP RWY 09

## Input data

Operation Type	0
SBAS Provider	1 (EGNOS)
Airport Identifier	ESSP
Runway	09
Runway Direction	0 (None)
Approach Performance Designator	0
Route Indicator	
Reference Path Data Selector	0
Reference Path Identifier	E09A
LTP/FTP Latitude	583510.0090N
LTP/FTP Longitude	0161354.0760E
LTP/FTP Ellipsoidal Height (metres)	32.0
FPAP Latitude	583508.9245N
Delta FPAP Latitude (seconds)	-1.0845
FPAP Longitude	0161610.5280E
Delta FPAP Longitude (seconds)	136.4520
Threshold Crossing Height	50.0
TCH Units Selector	0 (feet)
Glidepath Angle (degrees)	3.00
Course Width (metres)	105.00
Length Offset (metres)	0
HAL (metres)	40.0
VAL (metres)	50.0

## Output data

Data Block	10 10 13 13 05 09 00 00 01 39 30 05 72 76 24 19 38 44 F7 06 40 15 87 F7 FF 08 2A 04 F4 01 2C 01 64 00 C8 FA 6A 56 2E A2
Calculated CRC Value	6A562EA2
Supplied CRC Value	6A562EA2
Comparison result	OK

## Required Additional Data

ICAO Code	ES
LTP/FTP Orthometric Height (metres)	4.0